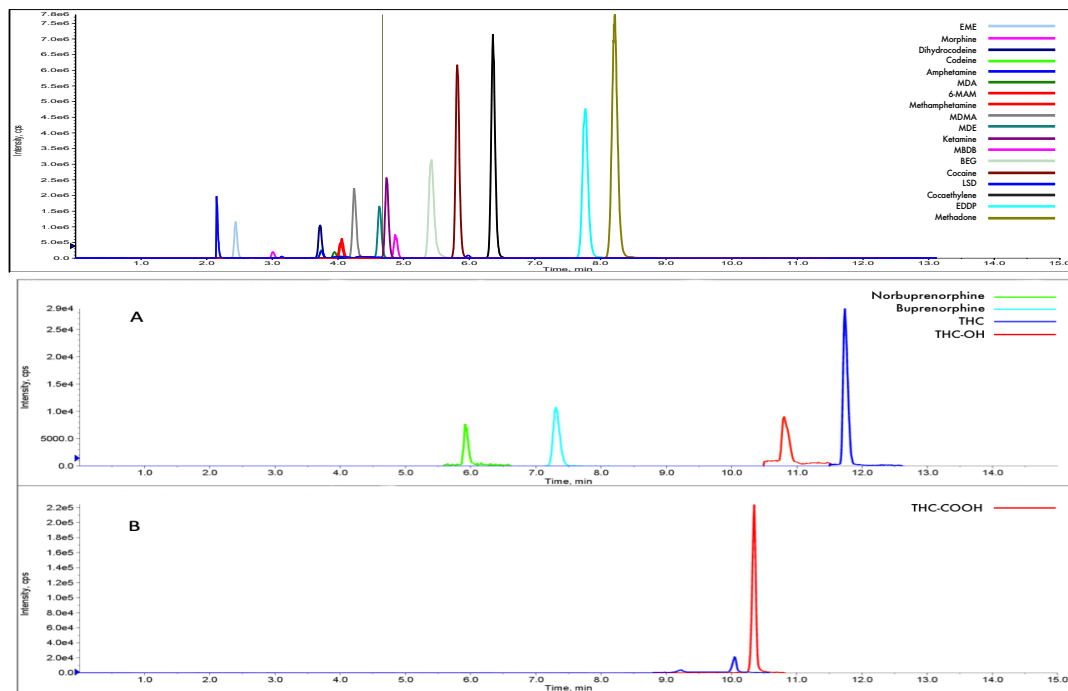


## FLOMASS<sup>®</sup> DRUGS OF ABUSE IN WHOLE BLOOD

Our panel of drug of abuse in whole blood includes Amphetamine, Methamphetamine, MDA, MDE, MDMA, MBDB, Cocaine, Benzoylcegonine, Ecgoninmethylester, Coca ethylene, Morphine, 6-MAM, Codeine, Dihydrocodeine, THC, THC-OH, THC-COOH, Methadone, EDDP, Buprenorphine, Norbuprenorphine, Ketamine, LSD.



### HPLC-MS/MS system conditions

**Ionization:** ESI positive mode, except THC-COOH analyzed in negative mode

**MS/MS:** specific MRM

**Injection volume:** 15  $\mu$ L (variable according to instrumental sensitivity)

**Running time:** 15 min

**Column heater:** 31 °C

**Column conditioning:** column should be conditioned for 5 min at the chromatographic gradient initial condition. Then run 3 blank injections (MPA only) using the gradient as indicated on IFU

## Sample preparation

- Prepare a mix composed of 100  $\mu$ L of Sol 1 Buffer + 20  $\mu$ L of Internal Standards Mix per sample
- Pipette in each vial 120  $\mu$ L of the mix prepared in the previous step of the procedure
- Add to each vial 100  $\mu$ L of whole blood and rinse out the tip several times
- Vortex and incubate for 5 min at room temperature
- Add gently 600  $\mu$ L of Sol 2 Precipitant cooled at  $-20^{\circ}\text{C}$
- Vortex for 30 sec
- Centrifuge at 12000 rpm for 12 min
- Transfer the supernatant into another vial and dilute it with Mobile Phase A depending on the instrumental sensitivity
- Minimum dilution for Opiates, Amphetamine, Ketamine, Cocaine and its metabolites, Methadone and its metabolites, Buprenorphine is 1:5 (50  $\mu$ L supernatant + 200  $\mu$ L MPA)
- Minimum dilution for Cannabinoids and Norbuprenorphine is 1:2 (100  $\mu$ L supernatant + 100  $\mu$ L MPA)
- Transfer into an autosampler vial with plastic adapter and analyze with HPLC-MS/MS technique

## Performance

For the detailed performance, please have a look at IFU.

## Ordering guide

EUM08100	FloMass <sup>®</sup> Drugs of Abuse in Whole Blood	100 assays
EUM8042	6-Levels Calibrators, lyophil.	3 x 6 x 0.6 mL
EUM08055	2-Levels Controls, lyophil.	3 x 2 x 0.6 mL
EUM00C02	Chromatographic Column	1 pc
EUM00A04	Precolumn	4 pcs

CHR-07-19-REV.2